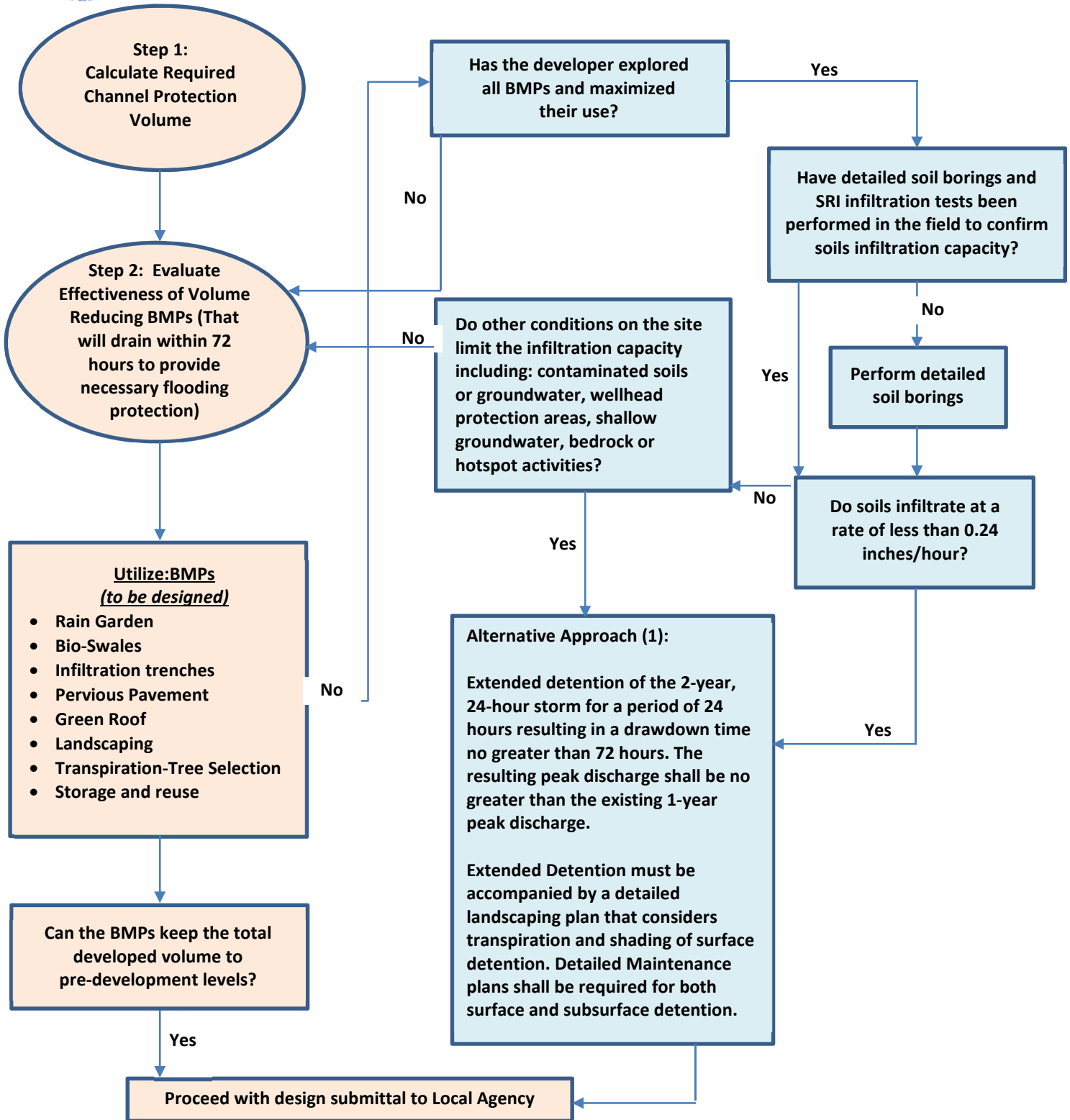




**THE CITY OF MOUNT CLEMENS  
STORMWATER ENGINEERING AND CONSTRUCTION STANDARDS  
Exhibit "A" Channel Protection Performance Standard  
Alternative Approach Flow Chart**



Ref: Lower Grand River Organization of Watersheds MS4 Stormwater Ordinance Committee Alternative Approach Flow Chart

1. NOTE: If utilizing extended detention as a post-construction storm water runoff control, additional BMPs likely will be needed to maintain the pre-development volume and peak rate levels for all storms up to the 2-year, 24-hour event, through green infrastructure or specific low impact development (LID) on-site BMPs for meeting the performance standard